



Lord City Sonarpur

...Bringing happiness to home



Lord Realty Pvt. Ltd.

Corporate Office :
7B, Ahiripukur Road, Kolkata - 700 019
Phone : +91 33 3057 6575/ 76,
Enquiry : +91 92300 00300
Fax : +91 33 3057 6577
E-mail : info@lordgroup.in, Web : www.lordgroup.in

Solicitors :
Quazi Fazlur Rahman,
7, Old Post Office Street,
Room No. 5, Kolkata - 700 001



Lord Realty Pvt. Ltd.

650 Bighas Plots / 93,60,000 sq.ft. Area

Lord Group is an upcoming real estate company in eastern region. Now experience the soothing comfort of mother nature in Sonarpur. Lord City Sonarpur presents you a wonderful township equipped with all the modern amenities.

Enjoy the facilities of club, gym, swimming pool, hospital, school, mall etc. in your vicinity.

We welcome you to the Nature's Home!

Ample, spaciouly paved roads
Plantation of sprawling greens
Rippling waters of an azure blue lake
And a life that eagerly awaits
your footsteps.

Floor Plan 2 Cottahs



Floor Plan 4 Cottahs



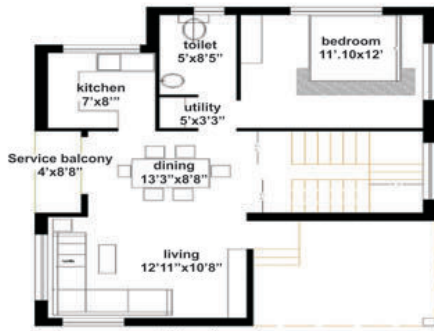
LOCATION MAP



Distance From Site :

Rupy Hospital (via PM Road)	30 Mins.
Rupy Hospital (via EM Bypass)	45 Mins.
Science City (via Basanti Highway)	40 Mins.
Sonarpur Railway Station	15 Mins.
Airport	50 Mins.
Airport (via Proposed Road)	30 Mins.
Shahid Khudiram Metro Stn. (Garia Dhalai Bridge)	25 Mins.

This brochure is not a legal document. It describes the conceptual plan. The images are imaginary and details are subject to change at the sole discretion of the developer.



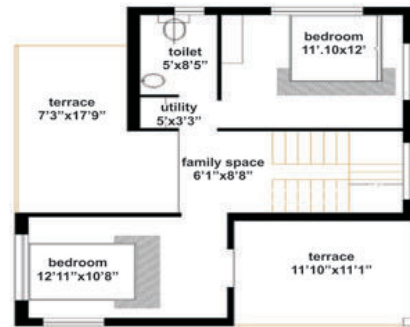
a= 715 sq.ft.

ground floor area=715 sq.ft.

plot size-2 Cottah

plan of a two storied bungalow

total built-up area = 1271 sq.ft. + 290 sq.ft [terrace]



first floor area = 556 sq.ft.
terrace area = 290 sq.ft.

Floor Plan 2 Cottahs



Floor Plan 4 Cottahs

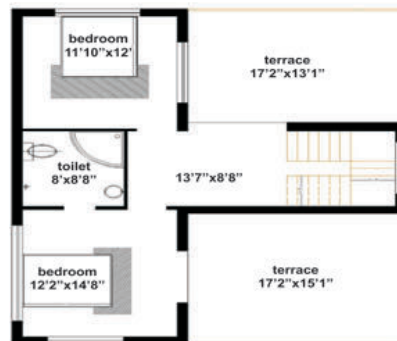


ground floor area=1198 sq.ft.

plot size-4 Cottah

plan of a two storied bungalow

total built-up area = 1913 sq.ft. + 483 sq.ft [terrace]



first floor area = 715 sq.ft.
terrace area = 483 sq.ft.

Facilities

1. Widespread Plantations & Well Planned Landscaping
2. Sprawling property with Water Body, Parks, Gardens & Avenues
3. Well Connected wide internal paved roads
4. Proper Street Lighting
5. Underground Drainage System
6. 24 x 7 Electricity
7. 24 x 7 Water
8. 24 x 7 Telecom and Broadband Connectivity
10. 24 x 7 Security Services
11. Beautifully designed bungalows with landscaped garden
12. Childrens Play Area
13. Community Hall
14. Club Facilities
 - a. Health Club b. Swimming Pool
 - c. Badminton / Tennis + Multipurpose Court
 - d. Billiards / Snooker e. table tennis and other board games



Club & Other Facilities

The common cord running through everyone's life nowadays is stress and strain. Spare time whether for relaxing with the family or for business entertaining is a costly commodity. Lord Club will give you a chance to boost your life with minimum effort...and maximum pleasure. There are two categories of members - Resident Members and Honorable Members. Resident Members are those persons who have become members by virtue of their acquiring a property from Lord Realty.

This membership is only to the original member. On his transferring his property to somebody else, the membership ceases and the new buyer has to take a fresh membership on payment of necessary admission fee and annual subscription.

The Honorable Members comprise eminent citizens of India, who are invited to frequently use the facilities at Lord City Sonarpur.

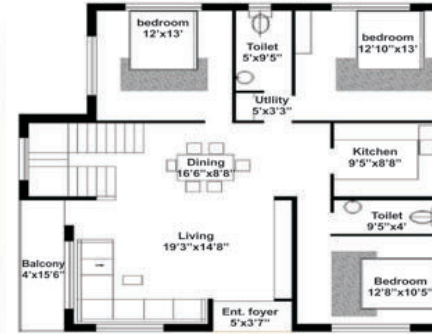


School

Lord Realty Pvt. Ltd. is concerned in the areas of education, health and society development. Its current focus is on education at the school level and, it will set up school in Lord City Sonarpur. Lord School at Lord City Sonarpur. A co-educational school will follow the CBSE syllabus; Lord School wanted to begin from Pre-primary to Standard 12 levels. Its academic environment and infrastructure are designed to ensure that student life is a truly global experience. The school will be supported by an in-house program. Lord school will be staffed by a dedicated team of qualified and experienced professionals. Our school will provide the holistic, inspiring and empowering learning to your child.



Floor Plan 6 Cottahs

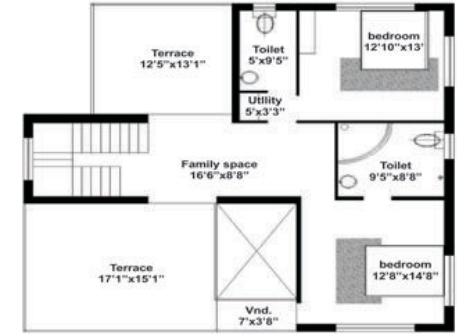


ground floor area=1390 sq.ft.

plot size-6 Cottahs

plan of a two storied bungalow

total built-up area = 2280 sq.ft. + 500 sq.ft [terrace]



first floor area = 890 sq.ft.
terrace area = 500 sq.ft.

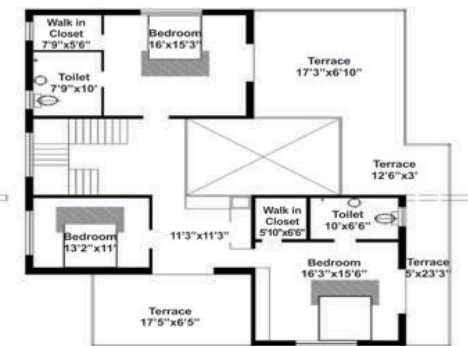


ground floor area=2180 sq.ft.

plot size-20 Cottahs

plan of a two storied bungalow

total built-up area = 3567 sq.ft. + 744 sq.ft [terrace]



first floor area = 1387 sq.ft.
terrace area = 744 sq.ft.

Floor Plan 20 Cottahs

Furnished Bungalow★

Kitchen ▶

Modular Kitchen unit
One refrigerator (165 ltr)
One geyser/hot water provision
One exhaust fan
Gas/electric stove/oven
Set of basic cooking accessories
One electric kettle
One toaster
Wall light



Bedroom

2 single beds/queen-size bed with bedside tables
Mattresses & 1 set of bed linen
Wooden Wardrobe
Writing table and chair
One ceiling fan
Bracket light
One air conditioner(split)
Window curtains
One TV set
Luggage shelf



Toilets ▶

Bath tub with shower drape
One exhaust fan
Light Fittings
One set of bath towels/toiletries
Geyser/ hot water provision



Living/Dining Areas

One sofa set
Centre table with side table and floor lamp
Dining table 4/6 seater with chairs with one set of table linen
Window curtains
Two ceiling fans
Bracket lights.
Side board



★ With extra charge

Building Specification

Foundation	: RCC (Reinforced Concrete Cement) framed structure
Wall	: Internal Wall 100/125 mm thick brick masonry, Plaster of Paris wall finish External wall 200/250 mm thick brick masonry
Roof	: Terracotta tile/green cover over RCC slab
Door	: Polished flush door at main entrance with nigh latch. Flush doors in bedrooms, bathrooms and kitchens.
Windows	: Anodized Aluminum Windows, Casement, Sliding.
Living/Dining	: (Porcelain/Vitrified/Ceramic) tile flooring
Bedroom	: (Porcelain/Vitrified/Ceramic) tile flooring
Kitchen	
Floor	: (Porcelain/Vitrified/Ceramic) tiles.
Counters	: Granite/Marble/Stone kitchen counter with stainless steel sink
Wall	: Porcelain/Vitrified/Glazed ceramic tiles two feet high above kitchen counter
Toilets	
Floor	: Vitrified tiles, Glass mosaic, Ceramic tiles and Bathtub in Master Bedroom (only in type C & D).
Wall	: Ceramic/Glass tiles on dado
Sanity ware	: Wash basins, Water Closet and Fittings of reputed make.
Staircase	: Kota Stone
Hardware	: Brass (only in type C & D) and Stainless Steel Hardware fittings of reputed make.
Electrical	: Concealed insulated copper wiring with modular switches, AC power points in all bedrooms, living room, geyser points in bathrooms, exhaust point Kitchen, Cable TV and Telephone point.
Interior Finish	: Plaster of Paris over cemented wall. Finished Acrylic paint in each room
Exterior Finish	: Stone Cladding/Texture Coat Paint and Weather Coat exteriors. Decorative paint over plastered wall
Landscape	: Principal landscape with trees and plants

Mall & Miniplex



Hospital



Lord City Sonarpur

Bringing happiness to home...



- 1 Apartments
- 2 Security Booth
- 3 Hospital
- 4 Commercial Hub
- 5 Hotel
- 6 Commercial Complex
- 7 School
- 8 Community Hall
- 9 Club & Water Body
- 10 Creche
- 11 14ft (Proposed 80 ft) PM Road
- 12 40 ft (Proposed 120 ft) Prasadpur Road

LEGEND:

- A - 2 Cottahs
- B - 4 Cottahs
- C - 6 Cottahs
- D - 20 Cottahs

A Township of 650 bighas /
13000 Cottahs of land area.

PROPOSED MASTER PLAN
Artistic View

